

SSF LF Braided Faucet Supply Connector • Spec Sheet



*Product will have LF imprinted on the body for Lead Free

FEATURES & BENEFITS

- Lead Free*
- 3/8" Compression x 1/2" FIP
- With Chrome Brass Nut
- cUPC Certified

SSF-12LF - 12' Long

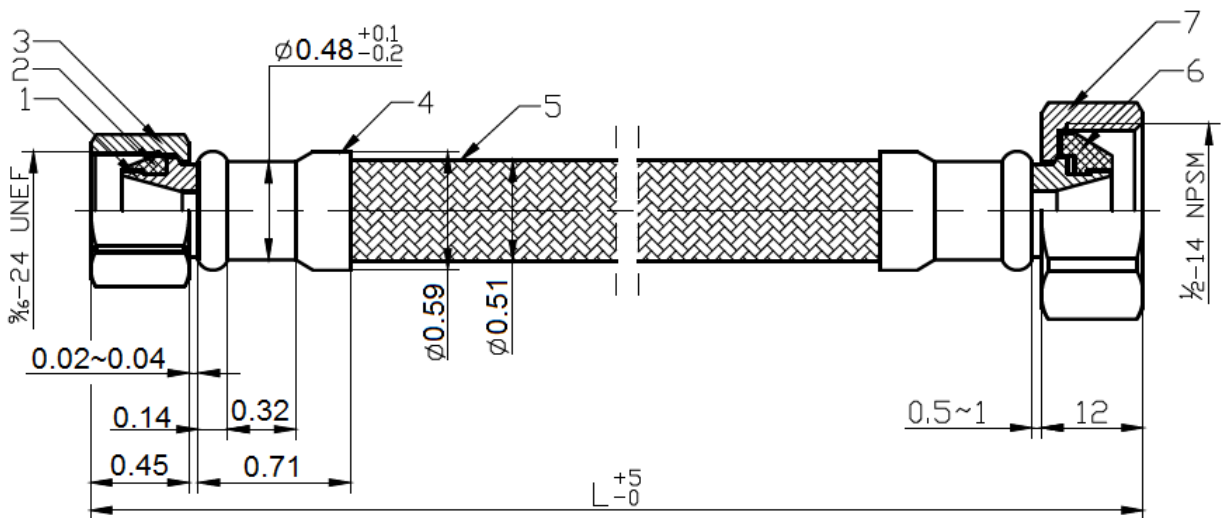
SSF-16LF - 16" Long

SSF-20LF - 20" Long

SSF-36LF - 36" Long

MATERIAL SPECIFICATIONS

No.	Part	Material
1	Insert	Brass C46500
2	Washer	EPDM
3	Nut	Brass HPb59-3
4	Ferrule	Brass H62
5	Hose	Stainless Steel SS304
6	Washer	EPDM
7	Nut	Brass HPb59-3



* These product complies with 0.25% weighted average lead content on wetted surfaces in accordance with Safe Water Drinking Act (SDWA) / Federal Public Law No. 111-380.

Global sourcing. National compliance. Local service.

CALIFORNIA 5593 Fresca Dr., La Palma CA 90623 • Toll Free: 866-532-8306 • Fax: 866-532-8307
TEXAS 1150 Silber Rd., Houston TX 77055 • Toll Free: 800-935-5456 • Fax: 713-680-2999
NEW YORK PO Box 27, Rt. 22, Brewster NY 10509 • Toll Free: 800-431-2082 • Fax: 845-278-9056
 WEB: www.matco-norca.com EMAIL: mail@matco-norca.com

SSF LF Braided Faucet Supply Connector • Spec Sheet



*Product will have LF imprinted on the body for Lead Free

FEATURES & BENEFITS

- Lead Free*
- 1/2" Compression x 1/2" FIP
- With Chrome Brass Nut

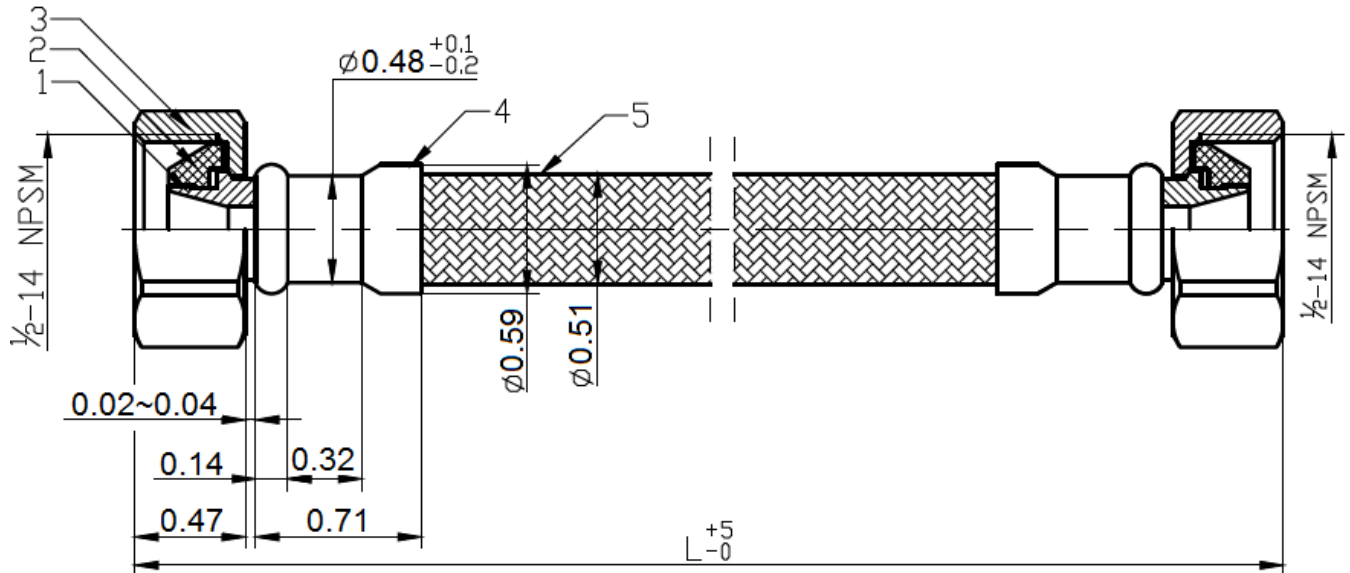
SSF-0315LF - 15" Long

SSF-0336LF - 36" Long

SSF-0348LF - 48" Long

MATERIAL SPECIFICATIONS

No.	Part	Material
1	Core	Brass C46500
2	Washer	EPDM
3	Nut	Brass HPb59-3
4	Ferrule	Brass H62
5	Hose	Stainless Steel SS304



* These product complies with 0.25% weighted average lead content on wetted surfaces in accordance with Safe Water Drinking Act (SDWA) / Federal Public Law No. 111-380.

Global sourcing. National compliance. Local service.

CALIFORNIA 5593 Fresca Dr., La Palma CA 90623 • Toll Free: 866-532-8306 • Fax: 866-532-8307
TEXAS 1150 Silber Rd., Houston TX 77055 • Toll Free: 800-935-5456 • Fax: 713-680-2999
NEW YORK PO Box 27, Rt. 22, Brewster NY 10509 • Toll Free: 800-431-2082 • Fax: 845-278-9056
 WEB: www.matco-norca.com EMAIL: mail@matco-norca.com