

D302555T



D302555T

## SPECIFICATIONS

### SHERIDAN™ TRIM ONLY FOR TWO HANDLE ROMAN TUB FAUCET

#### Model

D302555T

#### Description

- 2 handle with solid brass spout
- 3 1/2" high spout, 8 1/2" spout length
- Soft Touch Personal Shower™ with integral diverter system\* sold separately
- Spout plug for pressure testing & plaster guard
- Fits 1 3/8" to 1 1/2" diameter mounting hole
- Use with valve: D210000BT (fixed) or D215000BT (widespread)
- Must order valve separately

#### Standards



- UPC/cUPC



- ADA Accessibility Guidelines for Buildings and Facilities - 309.4 Operation for Operable Parts

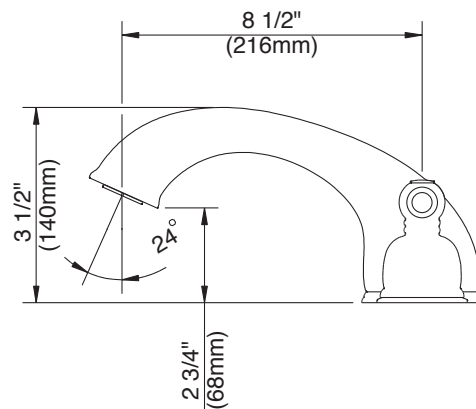
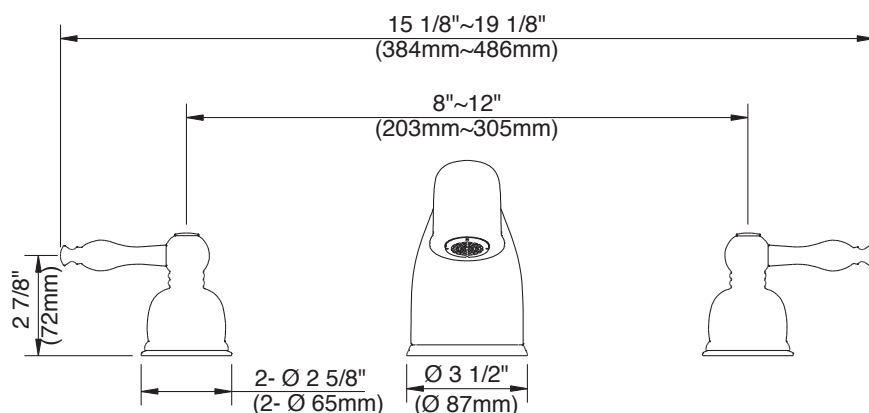
#### Warranty

Danze products are covered by a manufacturer's limited "lifetime" warranty for manufacturing defects.



#### Finishes Available

- Chrome
- Other: Refer to Price List for additional finish



Submittal Information:

Job Name: \_\_\_\_\_

Location: \_\_\_\_\_

Contractor: \_\_\_\_\_

Contact #: \_\_\_\_\_