

## SPECIFICATIONS

### MELROSE™ TWO HANDLE CENTERSET LAVATORY FAUCET

#### Model

D301012

#### Description

- Ceramic disc valves
- 4 ½" high spout, 4 ½" spout length
- With 50/50 pop-up drain assembly
- 3 hole mount
- 1.5gpm (5.7L/min) maximum flow rate @60 psi

#### Standards



NSF/ANSI 372

• NSF/ANSI 372

MEETS ASME  
A112.18.1M/A112.18.1

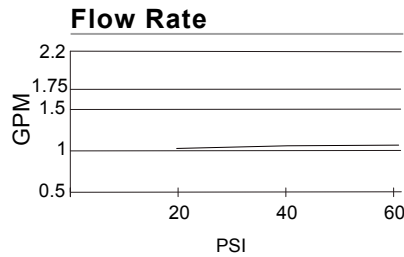
• ASME A112.18.1M/A112.18.1



- ADA Accessibility Guidelines for Buildings and Facilities - 309.4 Operation for Operable Parts

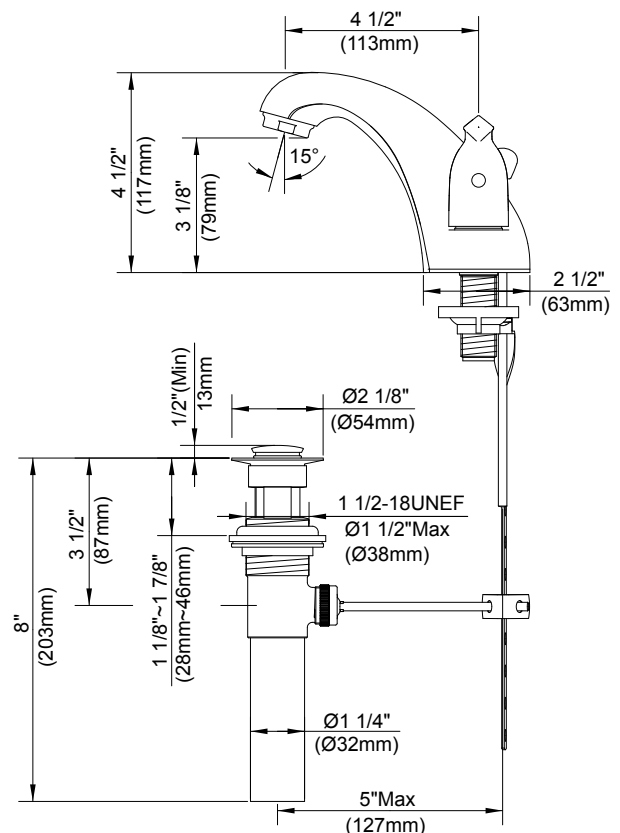
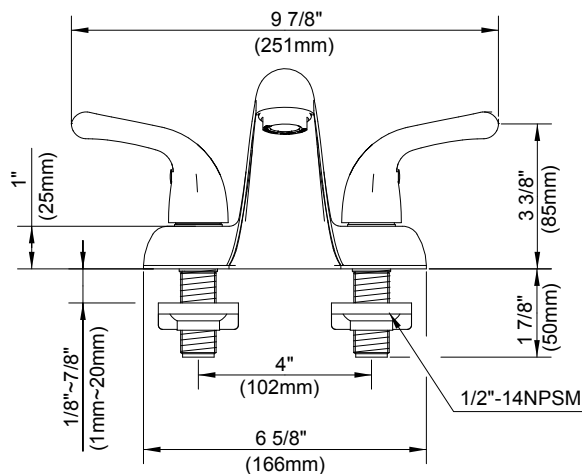
#### Warranty

Danze products are covered by a manufacturer's limited "lifetime" warranty for manufacturing defects.



#### Finishes Available

- Chrome
- Other: Refer to Price List for additional finish



#### Submittal Information:

Job Name: \_\_\_\_\_

Location: \_\_\_\_\_

Contractor: \_\_\_\_\_

Contact #: \_\_\_\_\_