

CAE260S – ACRYLIC SHOWERS

inches

60 x 34 x 80

TUB-SHOWER MODEL #CAE260S



FEATURES

- Stylized smooth wall
- Slip resistant floor
- Lucite® cast acrylic surface
- Face pack
- Molded shelves
- Limited 5-year warranty

OPTIONS

- Designer drain waste & overflow: Bone, Brushed Nickel, Polished Brass, Polished Chrome, White
- Shower door series: L0516

AQUATIC ADVANTAGE

- National distribution
- 6 manufacturing facilities
- Private fleet
- Centralized customer service
- Field support

COLOR & TRIM OPTIONS

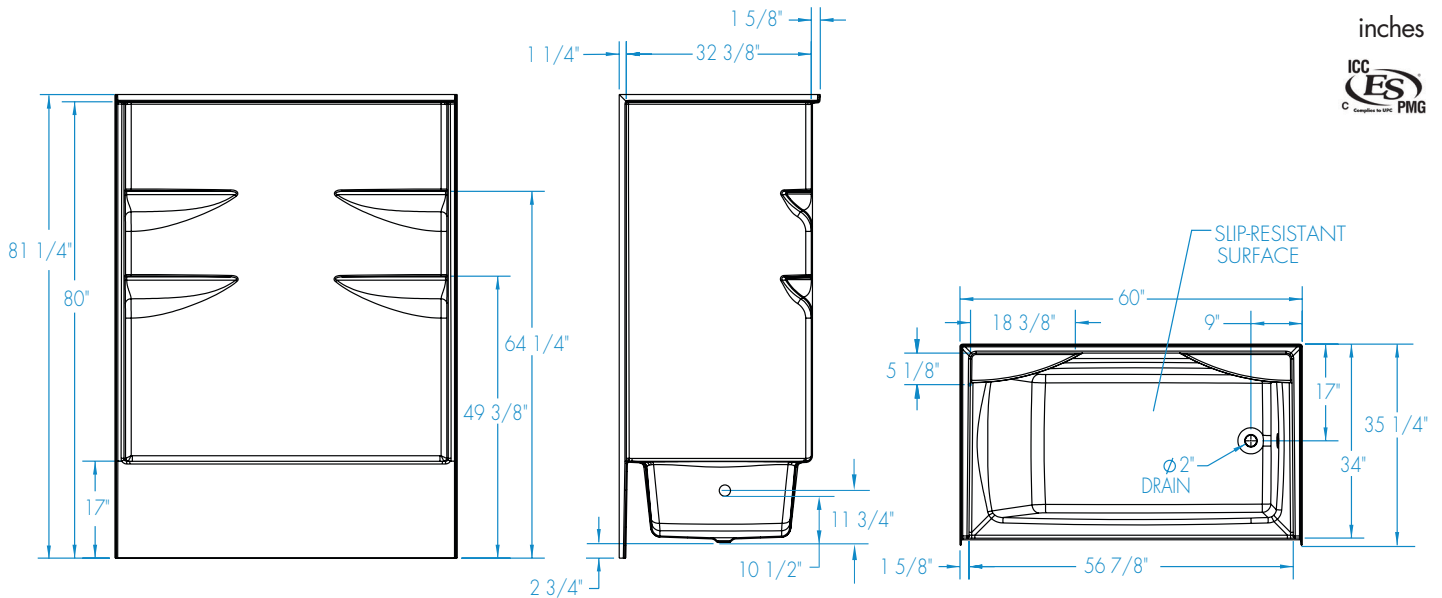
Stock	Premium
Biscuit White	Black Sterling Silver



CAE260S

60 x 34 x 80

inches



FEATURES lbs Dimensional Tolerance $\pm 3/8"$. Dimensions needed for site preparation should be measured from the unit. Aquatic assumes no responsibility for preparatory work.

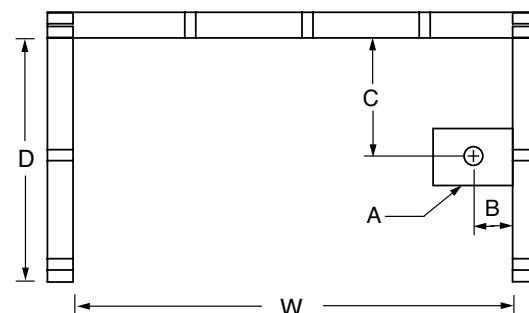
Type and Model #	Material	Wall Finish	Pieces	Drain	Seats	Lights	Pkg. Wt.
Tub-Shower #CAE260SL/R	Acrylic	Smooth Wall	1	LH or RH	—	—	161

DIMENSIONS

Specifications	inches
Width: Overall / Net	60 /
Depth: Overall / Net	35 1/4 / 34
Height: Overall / Net	80 / 81 1/4
Enclosure Opening	56 7/8
Skirt Height	17
Drain Rough-In (from Back Wall)	17 7/8
Drain Rough-In (from Side Wall)	9
Drain: Diameter / Clearance	2 / 2 3/4

FRAMING DIMENSIONS inches

Type	D Depth	W Width	H Height	A Box-Out	B	C
Alcove	35 1/4	60 1/8	—	6 x 12	2 3/4 *	17



*To center of stub-up

SUMP DATA

Top of Drain to Bottom of Overflow	Capacity to Overflow gal (ltr)	Min. Operating Capacity gal (ltr)	WIDTH @ centerline		DEPTH @ centerline	
			Top	Bottom	Top	Bottom
9 5/8	43	—	52 7/8	42 1/8	26 5/8	24 1/4